

Sparklike Handheld™ 3.0



Table of Contents

- | | | | |
|----|---|-----|--|
| 1. | Delivered with the device | 9. | Using the screen |
| 2. | How does it work | 10. | How to create a log file |
| 3. | How to use and starting up for the first time | 11. | How to erase the last logged file |
| 4. | How to use encoder button | 12. | How to turn off the log mode |
| 5. | Factors to consider when measuring | 13. | Enabling the connection with your computer |
| 6. | Installing the software | 14. | Information display |
| 7. | Installing the USB drivers | 15. | Inverting the colors of the display |
| 8. | How to connect to your computer | 16. | Technical specification |

WARNING

- ▶ The instrument uses high voltage, therefore the device should NEVER be used near computers nor other sensitive electronic devices.
- ▶ Persons with heart conditions or who use pacemakers should not use this device.
- ▶ The high voltage discharge should never be directed at humans or at animals either directly or through a conductive material such as wires or metal structures.
- ▶ The Sparklike Handheld™ should NEVER be used to measure any flammable substances nor be used in any flammable environment. Also make sure that the insulating glass unit does not contain any flammable substances. (Such as Isopropanol, Alcohol, Acentone, Xylen, Thinner)
- ▶ The device should never be used in wet or in humid conditions.
- ▶ Never use the instrument while standing on unsteady surfaces.
- ▶ The device is a precision measuring instrument and should be handled accordingly. Please, handle the device with care.
- ▶ Always turn off the power when instrument is not in use.
- ▶ Keep fingers and other body parts clear of the high voltage area when using the device. Do not keep the device connected to your computer nor other electronic devices while performing measurements.
- ▶ Do not open the Sparklike Handheld casing. In such case calibration is void and no safety guarantee can be granted.
- ▶ Do not use any other battery charger than charger provided by the manufacturer.
- ▶ Do not use any other power source for the Sparklike Handheld than the battery provided with the device.

1. DELIVERED WITH THE DEVICE

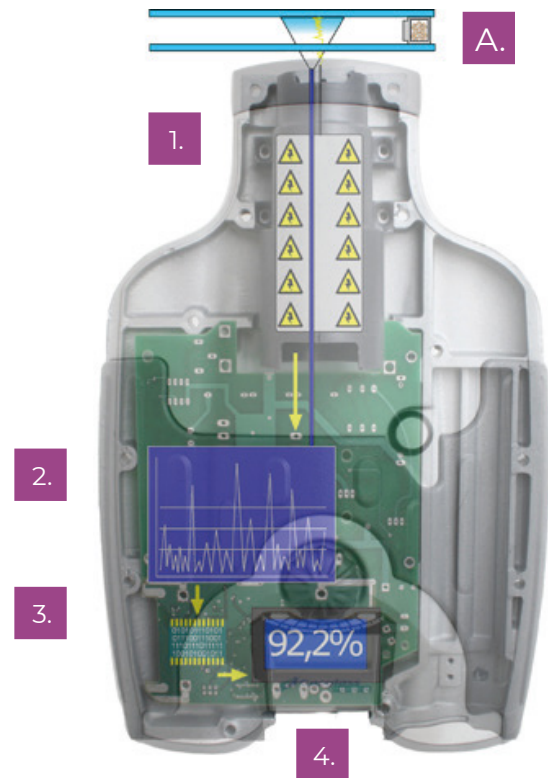
1. Sparklike Handheld™ device
 2. Neck strap
 3. Setup Guide
 4. Calibration certificate
 5. Battery
 6. USB Cable
 7. Battery charger and power cord
 8. Carry case
 9. Protective cap
 10. Option: Protective hard case
- Software, Drivers and Instruction manuals can be downloaded at sparklike.com/handheld

Delivered with the device



2. HOW DOES IT WORK

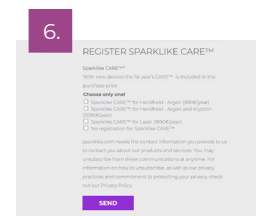
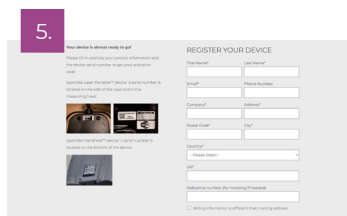
A high voltage spark (1) is ignited inside the IG unit (A). This high voltage spark causes the argon atom to emit light to a spectrometer (2). A microprocessor (3) interprets the information of the spectrometer and calculates the argon concentration on the display (4).



3. HOW TO USE AND STARTING UP FOR THE FIRST TIME

1. Open the battery hatch
2. Insert the battery
3. Connect it to the battery socket
4. Turn on the device from the ON/OFF switch
5. Register your device to activate the device at sparklike.com/register to receive an activation code to your e-mail
6. Register CARE
7. Input the activation code
8. Device settings will show on the screen
9. The device is ready for use

NOTE: Read all the warnings before the device is taken into use.



4. HOW TO USE ENCODER BUTTON

Press down to:

1. Enter MENU
2. Confirm a selection

Turn to:

3. Scroll in the MENU
4. Name a log file



5. FACTORS TO CONSIDER WHEN MEASURING

Factors affecting the optics:

- ▶ Coloured glass
- ▶ Tinted glass (minimal effect)
- ▶ Strong background light measurement (against the sun or other source)
- ▶ Dirt on the glass (minimal effect)
- ▶ Dirt on the front optical fibre
- ▶ Mistreated front optical fibre or electrode

Factors making it easier for the spark to “jump“:

- ▶ High argon fills
- ▶ Thin glass (6mm or less)
- ▶ Thin air space (20mm or less)
- ▶ Metallic or other conductor on surface 3, such as low-e coating
- ▶ Metallic spacer bar

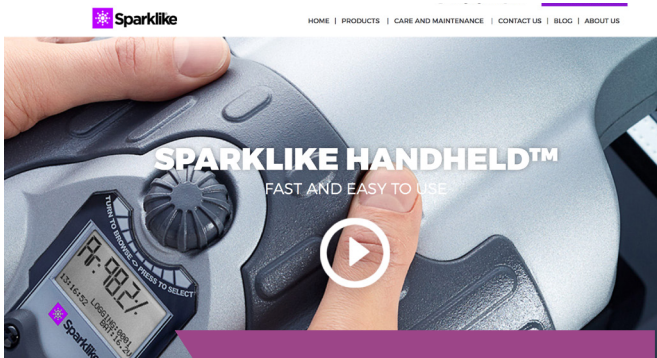
Factors affecting the spark:

- ▶ Thick glass (over 6 mm)
- ▶ Plastic films on glass 1 (laminated glass, coatings, etc.)
- ▶ Metallic films on glass 1
- ▶ Metallic components in glass 1
- ▶ Low Argon fill (less than 90%)
- ▶ Wide spacer (over 15mm)
- ▶ Electrode is not in contact with the glass surface
- ▶ Sparklike Handheld is not evenly pressed against the glass
- ▶ Non-metallic spacers

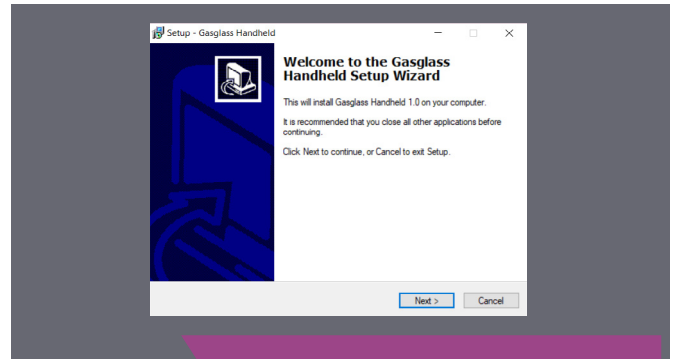
Correct conditions:

- ▶ Stable dark background light
- ▶ The device NOT moved during measurement

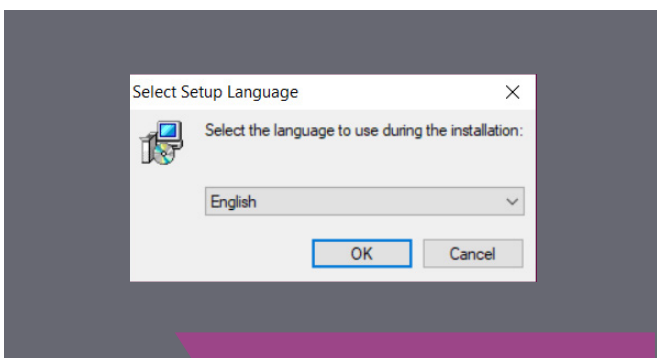
6. INSTALLING THE SOFTWARE



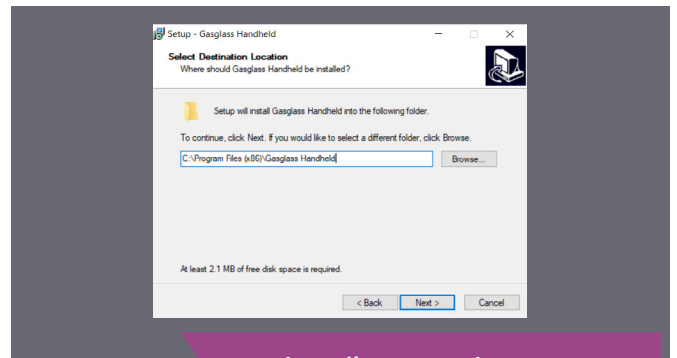
Download the software from sparklike.com/handheld



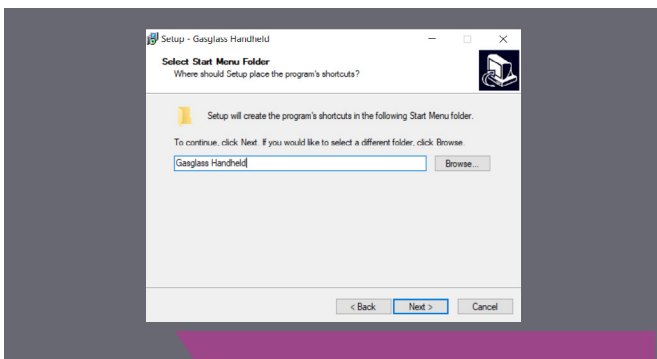
Install wizard start up



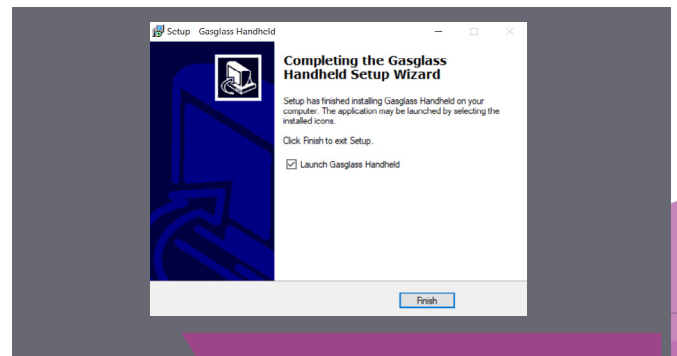
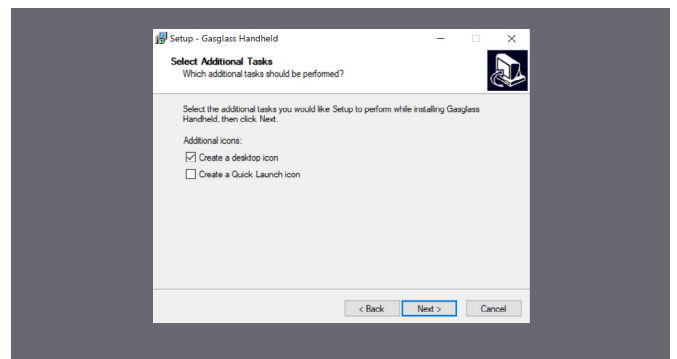
Select language for the installation



Select directory where software files are to be installed



Select the name of the start up folder

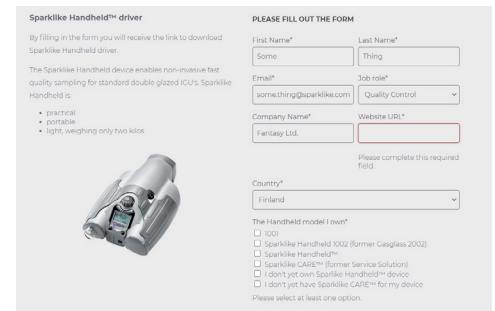
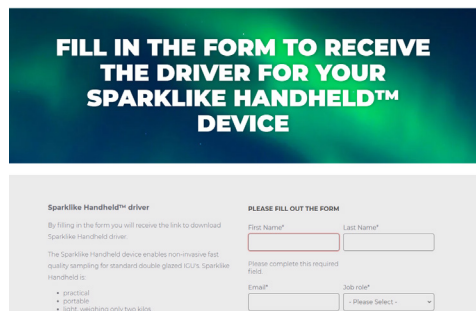
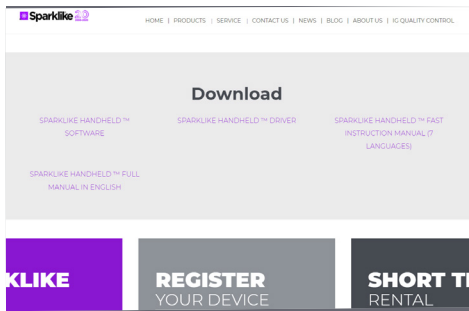


Installation completed

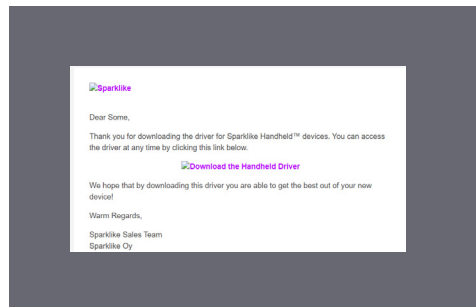
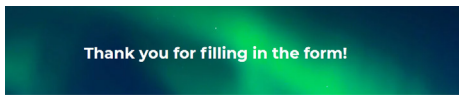
NOTE: The appearance of the Windows will vary according to your computer.

7. INSTALLING THE USB DRIVERS

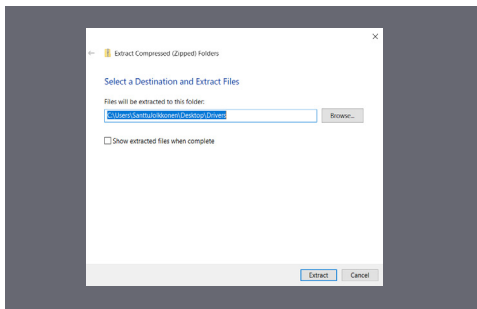
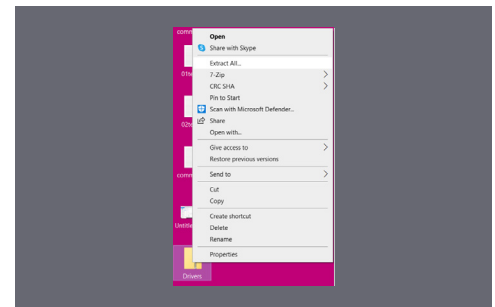
Handheld™ drivers should install automatically in couple of minutes, when you connect Handheld to a PC with Windows10+ and internet connection. If you have older Windows version, you can download the driver from Sparklike's website:



Download the driver installation folder

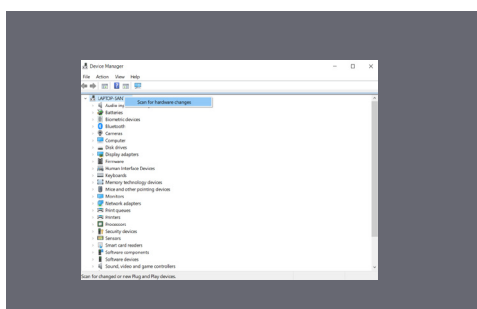


Unpack the folder

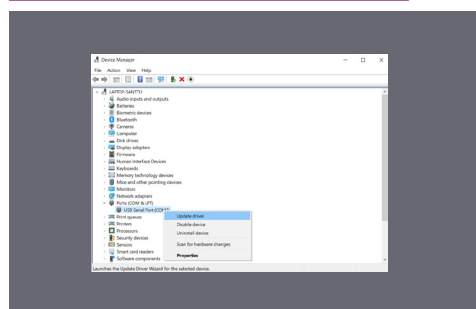


Connect Handheld to a PC with USB cable

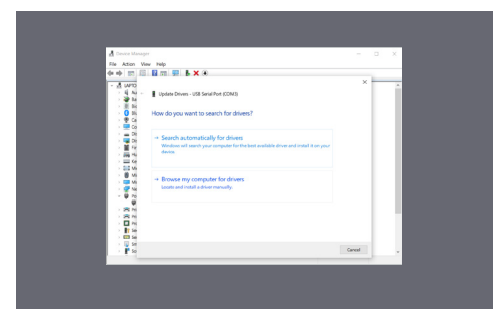
If your PC asks the location of the driver, give the unpacked driver folder location



If your PC doesn't ask about the driver, open the Device Manager, and select 'Scan for hardware changes'



Once you get the new connection to the Device Manager's list, right click the connection, and select 'Update Driver Software'



Follow the installer instructions

8. HOW TO CONNECT TO YOUR COMPUTER

The software for Sparklike Handheld™ can be downloaded at sparklike.com/handheld

Please make sure that all needed software and drivers are installed before attempting to connect Sparklike Handheld™ with your computer.

1. Connect the provided USB cable to the USB socket in Sparklike Handheld™. Connect the provided USB cable to your computer.
2. Start up Sparklike Handheld™.
3. Enable the connection between your computer and Sparklike Handheld from the device by selecting “PC connection”.
4. Start the software.
5. Press the “Read Datalogs”



Gasglass Handheld v.1.0.24

File Data

- Copy Current Log
- Copy All Logs

Copies all log files to clipboard

Copies selected log files to clipboard

Sparklike Handheld serial number: HH12/0345

Downloaded log files

Information from selected log file

PC Time and Date: 19.11.2021 09:56:17 Sync GGHandheld

Syncs and updates time and date on Sparklike Handheld

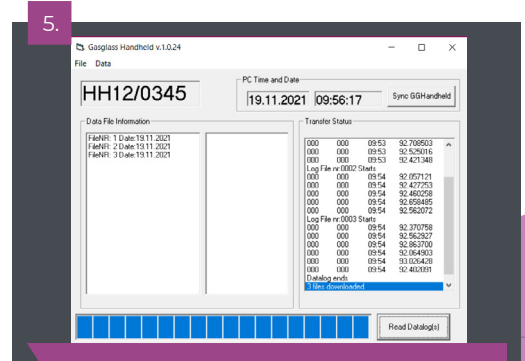
Shows all transferred data

Retrieves all logs from Sparklike Handheld

Status of transfer

Read Datalog(s)

FileNR	Date	Time	Start	End
000	000	09:53	92.708503	
000	000	09:53	92.525016	
000	000	09:53	92.421348	
Log File nr:0002 Starts				
000	000	09:54	92.057121	
000	000	09:54	92.427253	
000	000	09:54	92.460258	
000	000	09:54	92.658485	
000	000	09:54	92.562072	
Log File nr:0003 Starts				
000	000	09:54	92.370758	
000	000	09:54	92.562927	
000	000	09:54	92.863700	
000	000	09:54	92.064903	
000	000	09:54	93.026428	
000	000	09:54	92.402091	
Datalog ends				
3 files downloaded.				



Software window after a successful download

9. USING THE SCREEN

1. When the ON/OFF button is switched ON, Sparklike Handheld™ will perform a self test where it checks itself for errors.
2. The screen will automatically change when all is tested OK
3. The first fixed screen after start up is a device information screen.
4. This screen will be important when communicating with the manufacturer.
5. The information screen shows:
 - ▶ Revision of the device
 - ▶ Last calibration date
 - ▶ Calibration status: "CALIBRATION VALID", "CALIBRATION SOON" or "CALIBRATION EXPIRED"
 - ▶ Current time
 - ▶ Battery charge status
6. Device is now ready to use
7. When the button is pressed for the first time after start up, the measurement result will show.
8. The current time and battery charge status can be seen on the screen.
9. It will also indicate that the measurement has not been logged. (see: How to create a log file)

SPARKLIKE HANDHELD
CALDATE:11:11:2021
CALIBRATION VALID
09:58:57 BAT:16.4U

SPARKLIKE HANDHELD
CALDATE:11:11:2021
CALIBRATE SOON
PRESS SELECT TO START

SPARKLIKE HANDHELD
CALDATE:11:11:2021
CALIBRATION EXPIRED
PRESS SELECT TO START

A: 94.0%
10:22:29 NOT LOGGED
BAT:16.4U

10. HOW TO CREATE A LOG FILE

1. From the main menu, scroll by turning the encoder button, to the LOG ON/OFF menu.
2. Select this by pressing the encoder button once.
3. The next screen shows that the logging is to be started.
4. The device will suggest the following free log name (number) available. If the suggested number is OK, simply press the encoder button to confirm.
5. By turning the encoder button the number of the log file can be changed. One click will increase or decrease the number with one.
6. When measuring a text is displayed showing that the logging mode is on and it will also display the log file number.

EXIT
LOG ON/OFF
CLEARLOG
DISPLAY CONTRAST
INVERT COLORS

MAIN MENU

STARTING NEW LOG
FILE: 0001

DATA LOGGING: ON
FILE NR:0001
10:24:20 BAT:16.4U

A: 94.6%
10:26:12 LOGGING:0001
BAT:16.4U

11. HOW TO ERASE THE LAST LOGGED FILE

When the log mode is on and a measurement has been taken but the operator feels that the measurement was an error measurement, it is possible to erase this measurement. This is done to prevent faulty log files on your computer.

If the measurement is not satisfying:

1. From the main menu, scroll by turning the encoder button, to the "CLEAR LOG" menu.
2. The log value will be deleted permanently.

Sparklike Handheld™ log data can be downloaded to your computer. In order to do this, Sparklike Handheld™ has to open its communication port to your computer. This is performed before enabling the connection from the computer.



12. HOW TO TURN OFF THE LOG MODE

1. From the main menu scroll, by turning the encoder button, to the LOG ON/OFF menu.
2. Select this by pressing the encoder button once.
3. A screen will display that the log mode has been turned off.
4. When measuring, a text is displayed that the measurements have not been logged.
5. To create a new log file with a new name, repeat procedure explained in chapter 10.

NOTE: When Sparklike Handheld™ is connected to a computer and the log files have been retrieved, the log memory will be deleted from Sparklike Handheld™ device. This is the only way of emptying the memory and should be done every now and then to prevent the memory from overflowing.



13. ENABLING THE CONNECTION WITH YOUR COMPUTER

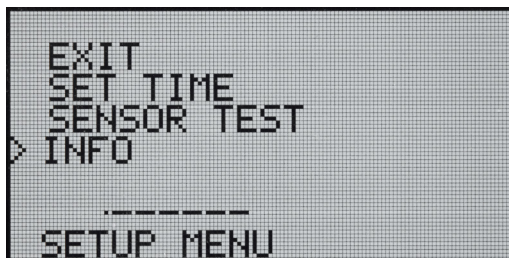
Sparklike Handheld™ log data can be downloaded to your computer. In order to do this, Sparklike Handheld™ has to open its communication port to your computer. This is performed before enabling the connection from the computer.

1. From the main menu scroll, by turning the encoder button to the PC-CONNECT menu
2. Select by pressing the encoder button once.
3. A screen will display that the PC communication is enabled.
4. Sparklike Handheld™ is open for communication with the PC.



14. INFORMATION DISPLAY

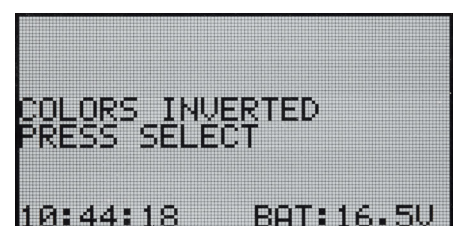
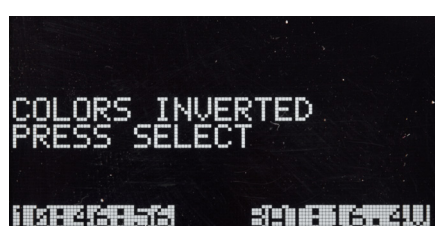
You can retrieve the device serial number and calibration information through SETUP >> INFO.



15. INVERTING THE COLORS OF THE DISPLAY

The colors of the display can be inverted, so that there is either black text on the white background, or vice versa. To change the color settings, click the encoder

button to access the encoder menu. Rotate the encoder button to select the INVERT COLORS, and click the encoder button to confirm the selection. Handheld needs to be restarted for the change to take effect.

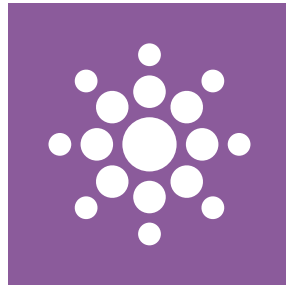


16. TECHNICAL SPECIFICATION

Overall Dimensions	Main unit	285 x 190 x 100 mm
Main Power Supply	16.8 V Li-ion Battery 2.0Ah	
Weight	The device	1.6 kg
	Canvas case	0.84 kg
	Protective hard case (option)	2.8 kg
Operating conditions	5 – 35 °C	
Humidity	10–90%	R.H. (Non-Condensing)
Measurement time	2 s	
Min/max glass thickness	2-6 mm	
Min/max cavity dimension	6-20 mm	
Connections	USB and Battery Charger	
Display	OLED 128×64 Pixel Display	
Software	Custom GGHandheld by Sparklike	
Data logging capability	1900 measurements, Windows10+ PC for data transfer	

* Typical construction of the insulating glass unit

** At least 30 measurements are needed that 95 % confidence interval is valid



Sparklike®

Your IG Quality Assurance

Like any measuring device, Sparklike Handheld™ requires annual calibration and maintenance to keep accuracy and reliability.

Sparklike CARE™ annual service program

Register to Sparklike CARE™ for calibration and maintenance with fixed annual fee.

sparklike.com/care

Not available for Handheld/ Argon devices in North America and Korea

Scan the QR-code for further instructions and support

sparklike.com/guidance/hh



Sparklike

Your IG Quality Assurance

CONTACT YOUR LOCAL DISTRIBUTOR:

www.sparklike.com/en/contact-us

CONTACT US:

sparklike@sparklike.com
Sparklike Oy
Helsinki, Finland